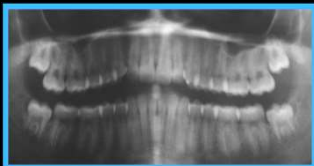
 **ACADEMY of GENERAL DENTISTRY** AGD2021 THE PREMIER MEETING FOR GENERAL DENTISTRY AUSTIN, TEXAS JUNE 9 - 12 AGD2021.ORG

Principles of Third Molar Extractions
Third Molar Case Selection Exercise (Terror Alert)



David L. Roberts, DDS, PA
June 6, 2021
dave@robertsdds.com

Disclaimer:
ADA CERP Standard IX

“Participants should be cautioned about the potential risks of using limited knowledge when integrating new techniques in their practice”

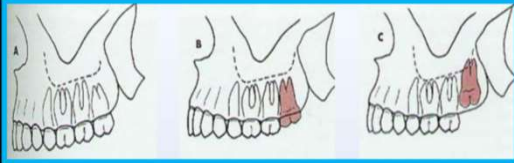
Principles of Third Molar Extractions
Classification of 3rd Molar Impaction

<p><u>Pell and Gregory</u></p> <ul style="list-style-type: none">a) Maxillary ABCb) Mandibular ABC123	<p><u>Winters Classification</u></p> <ul style="list-style-type: none">a) Verticalb) Horizontalc) Mesioangulard) Distoangulare) Invertedf) Transverse<ul style="list-style-type: none">buccally inclinedlingually/palatally inclined
--	--

Principles of Third Molar Extractions

Classification of 3rd Molar Impaction

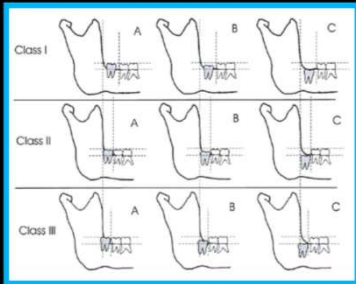
Pell and Gregory ABC Maxillary Classification



Principles of Third Molar Extractions

Classification of 3rd Molar Impaction

Pell and Gregory ABC123 Mandibular Classification



Principles of Third Molar Extractions

Classification of 3rd Molar Impaction

Winters Maxillary Classification



Principles of Third Molar Extractions

Classification of 3rd Molar Impaction

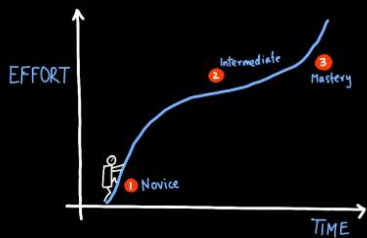
Winters Mandibular Classification



Third Molar Impactions

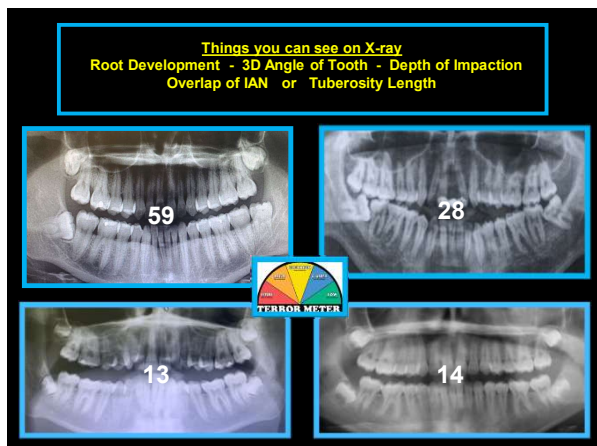


The Learning Curve









Things you can see on X-ray
Root Development - 3D Angle of Tooth - Depth of Impaction
Overlap of IAN or Tuberosity Length

The block contains four panoramic X-rays arranged in a 2x2 grid. The top row shows teeth 15, and the bottom row shows teeth 16. A central 'TERROR METER' diagram is overlaid on the images. The diagram is a semi-circle with a color gradient from red (0) to blue (100) and a needle pointing to approximately 40.

Things you can see on X-ray
Root Development - 3D Angle of Tooth - Depth of Impaction
Overlap of IAN or Tuberosity Length

The block contains four panoramic X-rays arranged in a 2x2 grid, all showing teeth 17. A central 'TERROR METER' diagram is overlaid on the images. The diagram is a semi-circle with a color gradient from red (0) to blue (100) and a needle pointing to approximately 40.

Things you can see on X-ray
Root Development - 3D Angle of Tooth - Depth of Impaction
Overlap of IAN or Tuberosity Length

The block contains four panoramic X-rays arranged in a 2x2 grid. The top row shows teeth 17 and 18, and the bottom row shows teeth 20 and 22. A central 'TERROR METER' diagram is overlaid on the images. The diagram is a semi-circle with a color gradient from red (0) to blue (100) and a needle pointing to approximately 40.
